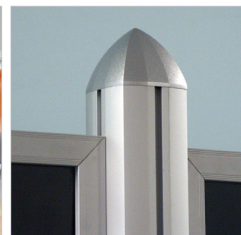
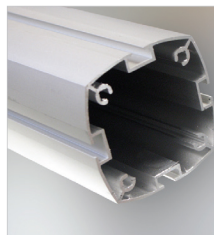





# Display Stands



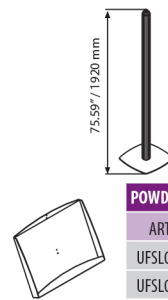
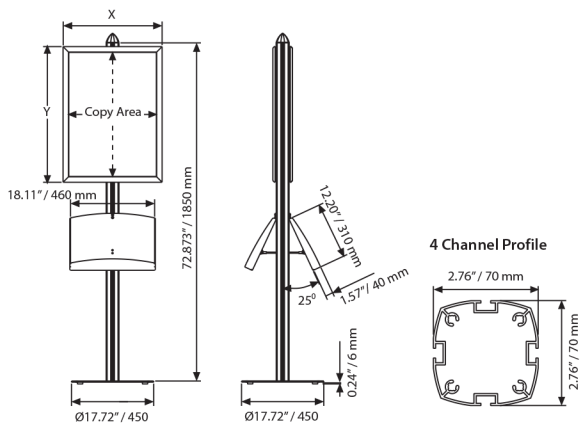
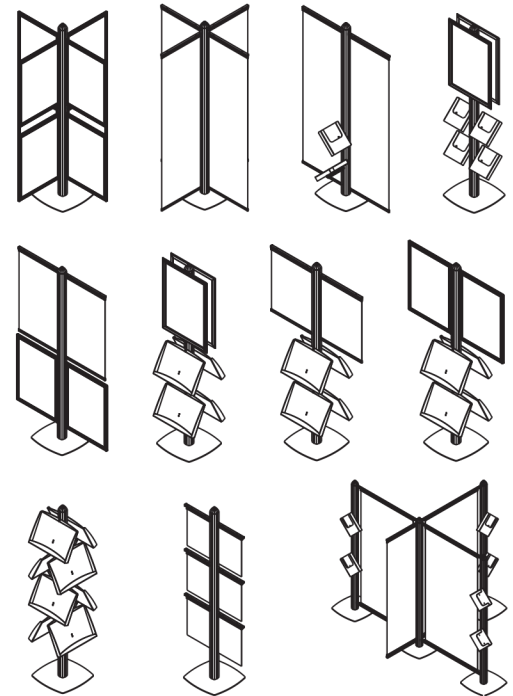
## 4 Channel

An ideal brochure stand for indoor use with different options. The fixing grooves on four sides of the central pole hold single-sided or double-sided frames and shelves separately or collectively at the same time. The frames are recommended in 1.1" profiles to be used in both portrait or landscape positions. The powder coated steel shelves are 0.05" thick and the clear acrylic shelves are 0.16". Each Shelves has a 2 x 8.5" X 11" capacity. Silver anodized and Black colors available.

-  Product is packed unassembled with an easy to understand instruction sheet & fixing set.
-  Make up your own stand in your desired variation. Heavy & stable base for public spaces.
-  2 packs. See info chart for pack sizes.



Some possible variations using 4 channel profile



| MAINBODY WITH 4 CHANNEL: Powder coated in RAL 9006 |                |                     |                         |
|--|----------------|---------------------|-------------------------|
| ARTICLE  | DESCRIPTION    | WEIGHT WITH PACKING | PACKING SIZE *W X H X D |
| UFSL001100   | Main body pole | 7.605 lbs           | 3.15" X 76.7" X 3.15"   |
|  | Main body base | 19.731 lbs          | 19.29" X 19.29" X 1.97" |

| POWDER COATED STEEL&ACRYLIC Shelves |                                |                     |                         |
|-------------------------------------|--------------------------------|---------------------|-------------------------|
| ARTICLE                             | CAPACITY                       | WEIGHT WITH PACKING | PACKING SIZE *W X H X D |
| UFSL002000                          | 2 X 8.5" X 11" steel Shelves   | 3.968 lbs           | 14.17" X 18.50" X 2.36" |
| UFSL003000                          | 2 X 8.5" X 11" acrylic Shelves | 3.086 lbs           | 14.17" X 18.50" X 2.36" |



\* W:Width H:Height D:Depth