

Perfex Pedestal SignFrames™



Image area:
3/8" margin covered by frame.
Frame is 1" wide x 5/8" deep.



SF3SRDTPH-S Shown with
WES8511 wet erase insert
(printing not included).

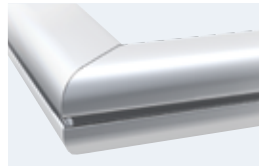
SF5SRDTPV-B

IMPRINTABLE

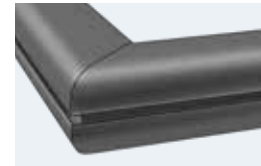
↓
For Media
up to 3/16"
↑

Curvilinear, All Metal - Contemporary Design

- Heavy duty extruded alloy
- Curvilinear frames, top slot
- Accepts graphics to 3/16" thick
- All frames are open 2 sides



Curvilinear Satin Silver



Curvilinear Matte Black

Specify: Size, Base, Upright, Orientation*, Color*

Size

SF3S	8-1/2" x 11"
SF4S	11" x 14"
SF5S	11" x 17"
SF6S	14" x 22"

Base

SQ Square	
12"	5 lb. SF3, 4, 5
16"	9 lb. SF6
RD Round	
11"	5 lb. SF3, 4, 5
13"	7 lb. SF6

Upright

TP	Telescopic 26"-50"
X	Fixed 36"

Orientation*

H	Horizontal
V	Vertical

Color*

-S	Satin Silver
-B	Matte Black

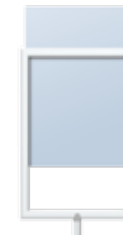
*Doesn't affect price, but must use to order.

Wet Erase Inserts (Accessory)

- Matte black acrylic, 1/8" thick
- Wet erasable, one side
- Use with chalk markers
- Easy to use and change

WES8511	8-1/2" x 11"
WES1114	11" x 14"

WES1117	11" x 17"
WES1422	14" x 22"



Top loading, accepts
media to 3/16" thick.

SF5SSQXH-B with
PB1C Pamphlet Holder